

WARREN BURTON ROAD  
S.H. 325 SECT. F (PART)  
GEORGIA COUNTY

SLM 17.94, 12"  
SEE SHEET 70B

SLM 17.85, 12"  
SEE SHEET 72

SLM 17.90, 12"  
SEE SHEET 72

SLM 17.79, 12"  
SEE SHEET 68

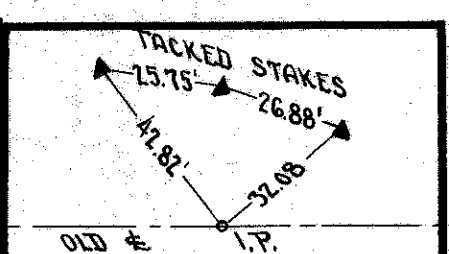
old CFN 284221783  
new CFN 1865606  
SLM 17.83, 18"  
SEE SHEET 71

SLM 17.90, 12"  
SEE SHEET 72

SLM 17.67, 12"  
SEE SHEET 68

SLM 17.73, 12"  
SEE SHEET 70

B.M. No 63  
SPK. IN SO. SIDE  
24' ELM  
STA. 931+46  
ELEV. 1075.438



CURVE DATA & NORTH PAVEMENT  
Δ = 96°-11'-30"  
D = 2°-30'  
R = 2291.83'  
T = 1493.78'  
L = 2647.07'  
E = 443.84'  
CH = 2502.87'  
P.C. = STA. 926+85.82  
P.T. = STA. 935+33.48

AFTER REMOVAL OF EXISTING PAVEMENT OUTSIDE THE LINE OF THE NEW PAVEMENT, GROUND IS TO BE LEVELLED TO CONFORM TO THE SURROUNDING TERRAIN.

922 923 924 925 926 927 928 929 930 931 932 933 934 935 936 937 938

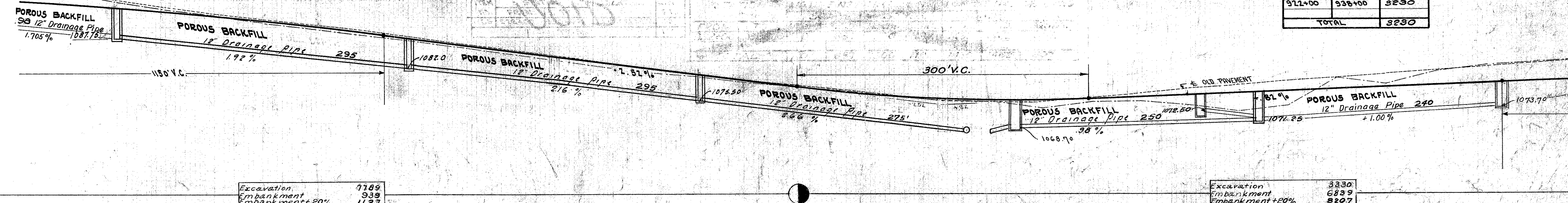
ROADWAY DRAINAGE					
ITEM	STATION	LT	12" DRAINAGE PIPE (POROUS BACKFILL)	Location	STRUCTURE
1D	923+00	RT	235'		
2D	926+00	RT	289'		
3D	929+00	RT	273'		
4D	932+25	RT	250'		
5D	934+80	RT	240'		
6D	922+00	RT	98'		
Total			1445'		

STRUCTURE 20' SPAN 4' UNDER			
ITEM	STATION	NEW STRUCTURE	SEE DETAIL
1C	923+00	12" Roadway Culvert	Sheet 68
2C	926+00	"	"
3C	929+00	"	"
4C	931+40±	18" Roadway Pipe	"
5C	931+60±	" Roadway "	"
6C	932+25±	12" Roadway "	"
7C	934+80±	12" Roadway "	"
8C	937+25'	12" "	70.8

PRIVATE DRIVES						
ITEM NO.	STATION	SIDE	WIDTH	EXCAVATION CU. YDS.	7'-TO 1'-7" APPROACH CONCRETE CU. YDS.	12" PIPE LIN. FT.
1-A	922+50	LT	10'	3	13.3	20
2-A	927+00	LT	10'	4	13.3	2
3-A	928+00	LT	10'	2	13.3	1
4-A	930+00	LT	10'	8	13.3	2
5-A	930+50	LT	120'	18	104.5	6
TOTAL				35	157.7	13

TREES TO BE REMOVED		
STATION	SIDE	SIZE
922+45	1-RT	30"
931+18	1-RT	30" 5' stump
922+15	1-RT	24"
TOTAL		

REMOVAL & DISPOSAL OF EXISTING PAVEMENT		
STATION	SA. YDS.	
FROM 922+00	TO 938+00	3230
TOTAL		3230



Excavation 7189  
Embankment 939  
Embankment +20% 1127

Excavation 3330  
Embankment 6839  
Embankment +20% 8207

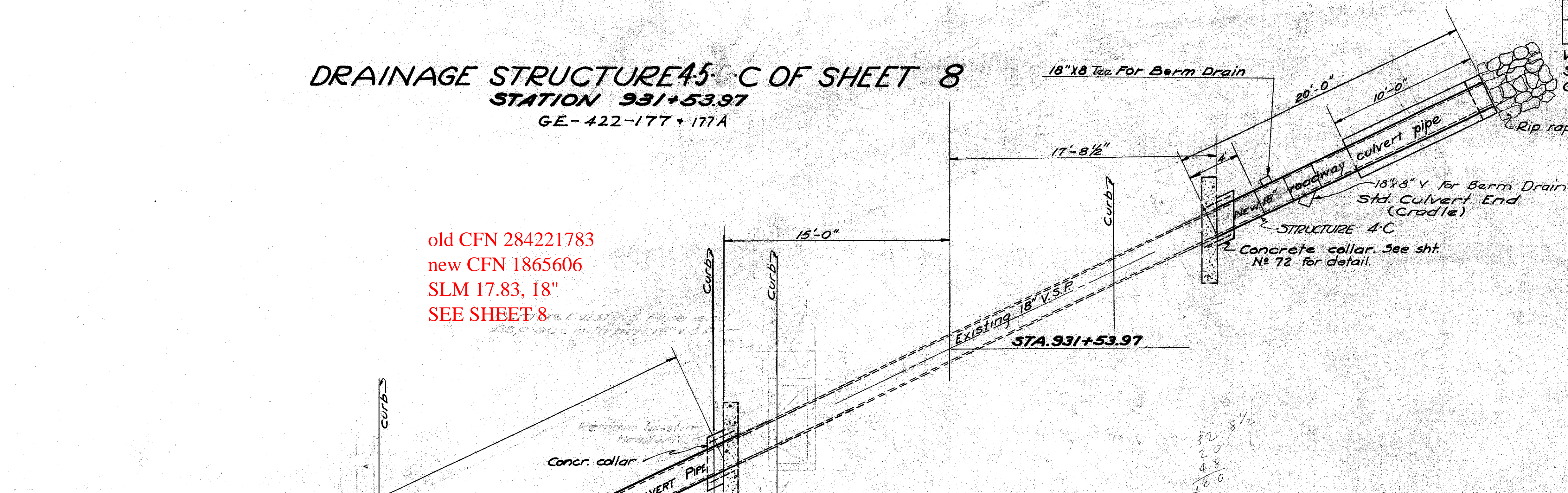
STA. 922+00 TO STA. 938+00



# **DRAINAGE STRUCTURE 45 - C OF SHEET 8** **STATION 931+53.97** GE-422-177 + 177A

WARREN BURTON ROAD  
 S.H. 325 SEC. F (Pt.)  
 GEauga COUNTY

old CFN 284221783  
 new CFN 1865606  
 SLM 17.83, 18"  
 SEE SHEET 8



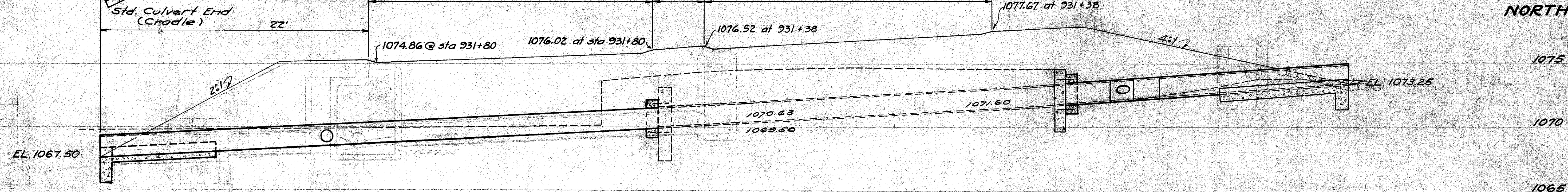
32'-8 1/2"  
 20'  
 4'-8"  
 16'-0"

## ESTIMATED QUANTITIES

Excavation	30 Cu. Yds.
Concrete (Class C)	2.2 Cu. Yds.
Reinforcing Steel	18.0 Lbs.
Dowel holes	8 Each
Rip rap	3 Sq. Yd.
18" Pipe For Rdwy. Culv.	62 Lin. Ft.
Pipe specials - 18" x 12" Y (for Rdwy. Culv.)	1 Each
Channel Excavation	35 Cu. Yds.
Removal of Existing Masonry	1 Cu. Yd.
18" x 8" Y Pipe Special (for Rdwy. Culv.)	1 Each
18" x 8" Tee " " " " "	1 Each

SOUTH

NORTH



## CULVERT DATA

TYPE - Pipe Culvert (Extension)  
 SIZE - 18" x 68"  
 WORK REQUIRED -  
 Extend present 18" x 36" V.S.P. culvert 20 ft. north and 48 ft. south with 18" roadway culvert pipe. Build std. culvert ends on north and south ends. Clean existing culvert. Excavate channel 50 ft. south and 75 ft. north of structure.